



Post Graduate Certificate in Artificial Intelligence

Batch-1

A large, stylized graphic of the letters 'AI' in a glowing blue, neon-like font. The letters are outlined and have a bright blue light source at the top of the 'A' and the bottom of the 'I', creating a sense of depth and digital energy. The background is a dark, gradient blue.

About INSOFE



International School of Engineering (INSOFE) is one of the top applied engineering education and research institute with areas of focus in big data analytics & data science. The institute was founded in 2011 by Dr. Dakshinamurthy V Kolluru, Dr. Sridhar Pappu and A S L Ganapathi Kumar in Hyderabad and expanded to Bengaluru in 2016.

It's flagship program, the Postgraduate Certificate in Big Data Analytics and Optimization (formerly CPEE) is certified for the quality of content, pedagogy and assessment by the Language Technologies Institute (LTI) at Carnegie Mellon University, USA. For the 4th consecutive year in a row, the certification features in the list of 'big data certifications that will pay off' that are published by the American IT magazine CIO.com. INSOFE finds mention in KDnuggets' list of Certificates in Analytics, Data Mining, and Data Science in 2014.

Initially, the school functioned under the mentorship of Dr. Dakshinamurthy, Dr. Sridhar and Dr. Sreerama Murthy. The institute now has 15 full time professors, 2 adjunct professors and a team of in-house data scientists. All professors at INSOFE hold PhD. from some of the world's top Universities and have combined industry experience of 250 years in building products, research and consulting. Even more than bringing this real-world experience to the classroom, they bring unbounded passion and the ability to simplify even the most complex topics.

Till date, over 2000 students and working professionals from across the globe that includes engineers, architects, tech leaders and CXOs have undergone INSOFE programs

About Hughes



Hughes Global Education, is a premier institution providing interactive onsite learning through satellite based education and training service. It was initiated by Hughes for corporate and working professionals/ students. It has live, interactive, real-time, two way video, voice and data classes with a spread across 85+ classrooms in 40+ cities/towns. Hughes Global Education platform has redefined the next generation of education i.e. real-time Interactive Onsite Learning (IOL). Its platform seamlessly integrates the strengths of the traditional method of education -- classroom teaching -- with the latest in technology.

Hughes Advantage

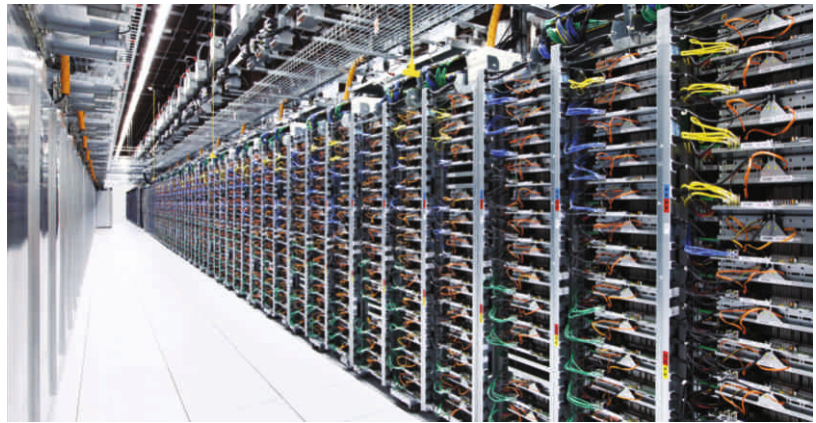
- ▶ The first and the pioneers in Interactive Onsite Learning in India for working executives
- ▶ More than 25000 alumni base
- ▶ 2500+ students enrolling every year
- ▶ 200+ programmes successfully completed so far

Programme USP

- ▶ Books, Cases and Study Materials included in the Course
- ▶ A dynamic team of programme directors, each from the core business area, to build in more rigour & quality into the program
- ▶ Quality interactions and increased peer group learning
- ▶ Specifically designed for working executives with all the flexibility benefits of Interactive Onsite Learning.
- ▶ Participants selected, based on elaborate selection process and profiling.
- ▶ Alumni Status from INSOFE
- ▶ Placement assistance to the registered participants and help the outreach of individuals with Industry

Programme Highlights

- ▶ Well researched & up-to-date Course Content
- ▶ Rigorous Programme Structure with assessments for every course
- ▶ Case studies, project and simulations
- ▶ Continue earning while you gain a high quality Certification and improve eligibility for better job profiles with a recognized certification
- ▶ Alumni membership of INSOFE present globally - which has its own sets of advantages for identity, brand value, and marketability of the participants



Programme Objectives

- ▶ Certification from INSOFE
- ▶ Career Enhancement

Eligibility

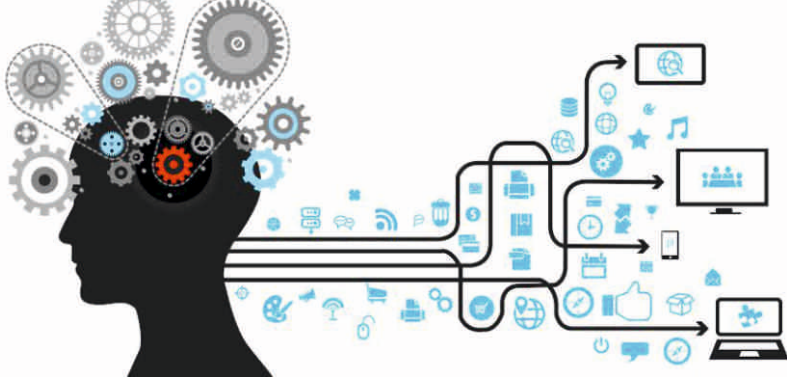
- ▶ Graduation in Science or Engineering (BE/ B.Tech/ BSC)

Course Content

- ▶ Fundamentals of Probability and Statistics
- ▶ Essential Engineering skills in Big Data Analytics: Data Preprocessing
- ▶ Statistics and probability in Decision Modeling
- ▶ Methods and Algorithms in Machine Learning
- ▶ Advanced ML Techniques
- ▶ Foundations of Text Mining and Search
- ▶ Optimization

Pedagogy

- ▶ Theory & Practical Inputs ▶ Case study approach
- ▶ Assignments, E-Learning, & Business Simulation



PGCAI

Schedule & Duration

Schedule: Sunday 6:45 pm - 9:45 pm

Duration: 1 Year

Campus Visit: 1 Campus component - 02 days at the end of the programme



Programme Fees

Application Fee	INR 2,000/- + GST
Programme Fee	INR 1,70,000/- + GST
Registration Fee	INR 4,250/- + GST

Note: All Fees are payable directly to HGEIL. Fee is exclusive of GST (@18%) which will be payable on actuals.

Installment Schedule

	I	II	III
Date	As per Offer Letter	5-Jan-2019	2-May-2019
Amount (INR)	60,000/- + 4,250/-	55,000/-	55,000/-

Note: Installment amount is exclusive of GST(@18%) which will be payable on actuals. Installment dates are approximate and subject to change if applicable

Important Dates

Application Closure Date: 14-September-2018 Class Start Date: October-2018

Note: Dates are approximate and subject to change if applicable



INSOF EDUCATION PVT. LTD.
 2nd Floor, Jyothi Imperial,
 Vamsiram Builders, Janardana Hills,
 Above South India Shopping Mall, Old Mumbai Highway,
 Gachibowli, Hyderabad – 500032



HUGHES GLOBAL EDUCATION INDIA LTD.
 Gurgaon – 122015, Haryana, India
 Tel: +91 7838884952
 Website: www.hugheseducation.com

For the list of Hughes classrooms in your city, please log onto www.hugheseducation.com